

# Slip Resistance



AMERICAN SOCIETY  
FOR TESTING AND  
MATERIALS



INTERNATIONAL  
ORGANIZATION FOR  
STANDARDIZATION



EUROPEAN  
COMMITTEE FOR  
STANDARDIZATION

Home Market	USA	Europe
Standard	ASTM 3445-21	EN ISO 20344:2004 (A1: 2007)
Slip resistance test medium	SR – tested on Clay quarry tile - Dry - Thoroughly wet (water)	SRA - tested on ceramic tile with diluted soap SRB - tested on smooth steel with glycerol or SRC - tested under both conditions
Slip resistance minimum COF performance	All $\geq 0,40$	- Test A: $\geq 0,31$ - Test B: $\geq 0,36$ - Test C: $\geq 0,19$ - Test D: $\geq 0,22$
Slip resistant markings applied when approved	ASTM 3445-21 SR	SRA SRB SRC – (meets both SRA and SRB requirements)



**SeaPro**  
ASTM – SR  
EN - SRC



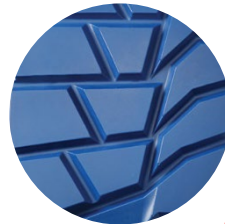
**FieldPro**  
ASTM – SR  
EN - SRC



**MetMax**  
ASTM – SR  
EN - SRC



**Chesapeake**  
ASTM – SR



**FoodPro**  
ASTM – SR  
EN - SRC

## WORK ACCIDENTS

NEARLY 1/3 OR 27% ARE SLIPS, TRIPS & FALLS

Safety footwear helps to protect workers from these and other risks in the workplace.

- *Select for slip resistance!*
- *Ensure safety boot outsoles are fit for purpose!*

